



UNIVERSITÀ
DEGLI STUDI
DI PADOVA

ESVCN

RESIDENCY CLASS 2020

NUTRITIONAL MANAGEMENT OF A CHRONIC GASTRITIS WITH MICRO ABSCESSSES
IN A DOG

MATLEY



- BOXER
- ENTIRE MALE
- AGE: 1 YEAR AND 8 MONTHS OLD
- VERY ACTIVE
- CURRENT BODY WEIGHT: 24,1 KG
- BCS: 3/9
- IDEAL BODY WEIGHT: 35 KG
- MCS: MODERATE MUSCLE LOSS

MATLEY'S CLINICAL SIGNS

- VOMITING
- NAUSEA
- CHRONIC DIARRHEA
- WEIGHT LOSS
- FECES WITH MUCUS
- LICKING
- OTITIS
- NORMAL APPETITE

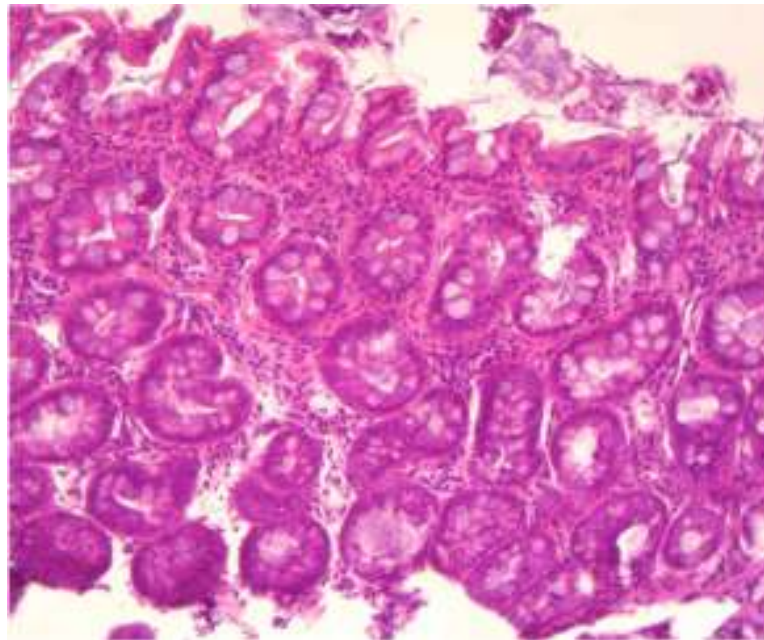


- MATLEY'S BIOCHEMICAL PROFILE SHOWED NO ABNORMALITY.
- GASTROINTESTINAL ENDOSCOPY AND BIOPSY WERE PERFORMED.
ENDOSCOPY REVEALED INFLAMMATION AND EDEMA OF THE ENTIRE GASTROINTESTINAL TRACT.



HISTOLOGY SHOWED A HISTOMORPHOLOGICAL PICTURE INDICATIVE FOR:

- CHRONIC, SUPERFICIAL GASTRITIS OF MODERATE DEGREE WITH PHENOMENA OF MICRO ABSCESES.
- CHRONIC, MODERATE TO SEVERE ENTERITIS AND CHRONIC, MODERATE COLITIS.
- MODERATE INFLAMMATORY LYMPHOPLASMACYTIC INFILTRATION THROUGHOUT THE GASTROINTESTINAL TRACT.



MATLEY'S DIET AT CONSULTATION TIME

THE DOG WAS FED A MIX OF COMPLETE COMMERCIAL DRY AND WET FOODS WITH A FIBER SUPPLEMENT

DIET COMPOSITION	g/DIE	KCAL/100 g*	KCAL / DAY
FARMINA ND LAMB AND QUINOA SENSITIVE DOG DRY	300	345,6	1037
FORZA 10 LAMB AND RICE PATE' DOG	300	100,3	301
FIBOR (VET PLUS®)	20	/	/
			1338



* Calculated according to modified Atwater

MATLEY'S NUTRITIONAL PLAN AIMS TO:

- CONTROL CLINICAL SIGNS
- RESTORE PROPER BCS, MCS AND IDEAL BODY WEIGHT
- FEED EASY DIGESTIBLE FOOD
- REDUCE DIETARY FIBER LEVEL
- INCLUDE EXCLUSION HOMEMADE DIET (food responsive?)



MATLEY'S FEEDING HISTORY

FOOD	HM	C	FOOD	HM	C	FOOD	HM	C
BEEF	X	X	TUNA			RICOTTA CHEESE	X	
PORK		X	SALMON		X	PARMISAN CHEESE	X	
CHICKEN	X	X	HAKE			RICE	X	
TURKEY	X		COD			POTATOES	X	X
HORSE			OCTOPUS			WHEAT PASTA		
LAMB	X	X	SOLE		?	CORN PASTA		
EGGS						BREAD	X	
RABBIT								

HM: HOMEMADE DIET

C: COMMERCIAL DIET

X: PREVIOUSLY FED FOODS

FOODS IN RED: NEVER FED BEFORE

?: NOT KNOWN IF FED BEFORE

ACCORDING TO THE FEEDING HISTORY AND CLINICAL SIGNS AN EXCLUSION HOMEMADE DIET WAS FORMULATED INCLUDING

- COD FISH
 - SOY OIL
 - PURE MCT OIL (C8 AND C10)
 - CARROTS
 - WHITE RICE
 - VITAMINS AND MINERALS SUPPLEMENT
-
- ENERGY INTAKE WAS CALCULATED ACCORDING $35\text{KG}^{0,75} \times 110$
 - THREE MEALS WERE RECCOMENDED

DIET PRESCRIBED TO MATLEY

FOOD/SUPPLEMENT	GRAMS PER DAY
COD	600
SOY OIL	40
PURE MCT OIL	20
WHITE RICE	140
PUMPKIN	200
V-INTEGRA ADULT DOG (Vetekipp®)	12

AFTER 2 WEEKS OF HOMEMADE EXCLUSION DIET CLINICAL SIGNS REDUCED BUT THE DOG LOST WEIGHT SO KCAL INTAKE WAS INCREASED.

KCAL INTAKE $35^{0,75} \times 130 = 1870$ (scrivi a quanto corrisponde questo incremento di energia rispetto alla dieta precedente!
Accompagna chi ti ascolta nei tuoi ragionamenti)

INCREASED KCAL DIET PRESCRIBED TO MATLEY

FOOD/SUPPLEMENT	GRAMS PER DAY
COD	600
SOY OIL	50
PURE MCT OIL	30
WHITE RICE	170
PUMPKIN	200
V-INTEGRA ADULT DOG (Vetekipp®)	12

ANALYTICAL VALUES OF MATLEY DIETS

	COMMERCIAL DIET	FIRST HOMEMADE DIET	SECOND HOMEMADE DIET
PROTEIN g/Mcal*	73,2	75	75
TOTAL g PROTEIN	97,9	120	120
FAT g/Mcal**	43	40	45
TOTAL g FAT	58	66	86 (+30%)
CARBOHYDRATES g/Mcal*	110	79	79
TOTAL g CARBOHYDRATES	148	125	149 (+19%)
FIBER % SS	4,4	1,5 (-81%)	1,4
ASH % SS	7,9	5,9	5,2
MOISTURE %	44	67	64
TOTAL KCAL	1338	1582 (+18)	1870 (+18%)

*CALCULATED ON 35 KG^{0,75}X110

** CALCULATED ON 35 KG^{0,75}X130

AFTER THREE MONTHS OF HOMEMADE DIET CLINICAL SIGNS WERE COMPLETELY ABSENT AND MATLEY'S WEIGHT WAS 27,9 KG WITH NORMAL MUSCLE MASS.

